



## **BST Coalition Annual Report 2016**

# Section 1

## Introduction

The Bonneville Shoreline Trail has been designated as Utah's Millennium Legacy Trail, as part of a White House initiative on the basis of our Governor's recommendation and the Utah Legislature recognized the trail during the 1999 General Session. The vision of the BST is a non-motorized trail that serves as an interface between the urban area and public lands along the Wasatch Front and will provide trail users with a recreational experience at a distance from motorized activities that is both safe and aesthetically pleasing. The Bonneville Shoreline Trail Coalition is an organization of entities, both citizen and governmental, representing the communities in Utah involved in promoting, planning and building the Bonneville Shoreline Trail (BST).

This report show the progress made in 2016 along the length of the trail. Work on the trail is performed by the different city, county and federal jurisdictions through which it passes.



Trail Miles	Proposed	Constructed to Date
Cache County	65	10
Box Elder County	35	0
Weber County	29	26
Davis County	56	14
Salt Lake County	56	27
Utah County	69	30
<b>BST Total Miles</b>	<b>310</b>	<b>107</b>

# Section 2

## Progress Reports



### BST Committee General Efforts

**Contacts:**

Jim Byrne – Bonneville Shoreline Trail Committee

Dave Roth – Bonneville Shoreline Trail Committee

The Bonneville Shoreline Trail Committee (BSTC) is a member of the Bonneville Shoreline Trail Coalition and focuses its efforts in Salt Lake and Davis Counties.

The BSTC has continued to work recruiting volunteers and coordinating efforts among coalition members. The BST volunteer mailing list now has 800 members. During 2016 the BSTC helped coordinate four volunteer trail work days on the Mount Olympus segment of the BST, including a National Trails Day event 85 volunteers and staff from supporting organizations.

For information about the BST contact Dave Roth at 801-824-5339 or [bonnevilleshorelinetrail@gmail.com](mailto:bonnevilleshorelinetrail@gmail.com) or contact Jim Byrne at 801-582-5631 or [jim.byrne@yahoo.com](mailto:jim.byrne@yahoo.com).

## County by County Progress Reports

### Cache County

Renewed planning efforts have resulted in conversations with all 15 landowners between Green Canyon and Smithfield Dry Canyon - none of which refuse the concept of a trail, but more months of conversations and meetings will occur before any agreed upon easement. A BST Template Document was developed for the planning / outreach process from Green Canyon to Birch Canyon. Other documents and planning processes are underway to discuss establishing and building an alignment between Wellsville and Mendon



During 2016, the City of Logan and Utah State University have been designing a walkway/trail that will connect the USU campus to the BST at the mouth of Logan Canyon along U.S. Highway 89. With assistance from Cache County and the Utah Department of Transportation, the construction of this Canyon Connector Trail project is slated for the spring of 2017 and should be completed before the end of the calendar year. The estimated cost for the whole project is \$500,000. During 2016, \$100,000 in RAPZ tax was awarded to the project. USU's share will cost about \$200,000 and Logan City and grants will cover the rest.



1/2 mile of BST was preserved from development/privitization through community activism at Providence Planning Commission meetings. A proposal had been made to reroute the BST onto a sidewalk in a proposed subdivision. An agreement was made to move the trail further east, which will result in a better trail, contoured with the slope instead of parallel to the deer fence.



BST right of way was preserved from Providence Canyon to Blacksmith Fork Canyon (4.6 miles) through a license agreement with UT DWR. New gates were installed to improve access to the BST at Millville Canyon



A new connection to the BST was built (.75 mi) from Blacksmith Fork Trail and Trailhead. BST standardized wayfinding signage was installed at Blacksmith Fork Trailhead. The parking surfaces of the Blacksmith Fork / BST trailhead were improved.



Hyrum City and the Utah Conservation Corps opened the new Blacksmith Fork River Trail. A new 1.8 mile trail extending from the BST at the mouth of the canyon to a turnaround further up, utilizing an old water main alignment.

Trail Miles	Proposed	Constructed to Date
Cache County	65	10

For more information about BST planning in Cache County, contact Dayton Crites at (435)755-1646 or [Dayton.Crites@cashecounty.org](mailto:Dayton.Crites@cashecounty.org).

**Box Elder County**

Through a coordinated effort between the National Park Service RTCA program, Bear River Association of Governments, Box Elder County, Brigham City, Perry, and Willard planning efforts have taken place to develop trail corridor concept plan of which the BST is a part.



Trail Miles	Proposed	Constructed to Date
Box Elder County	35	0

For more information about BST planning in Box Elder County, contact Zac Covington at (435) 713-1423 or [zacc@brag.utah.gov](mailto:zacc@brag.utah.gov).

## Weber County

In 2016 the work on the BST in Weber County was mostly related to maintenance and improving the connections to the BST.

On the southern part of the BST, we undertook a couple of projects to improve the trail system and surrounding open space. The Weber River Cooperative Weed Management Association worked with the Forest Service and Weber Pathways to control yellow starthistle on the BST in the foothills above South Ogden and on the BST Connector between South Ogden and Uintah. This noxious weed is poisonous to horses and can cause injuries to dogs, as well as flat tires if it happens to be lying across the trail.



Weber Pathways also surveyed and began cutting the western leg of the Uintah Loop. This new trail maintains a grade of 9% or less and will be friendlier to bicyclists than the dirt road now being used, which is steeper than 20% in many places. As part of the BST Connector, it will also create a more direct route to the Weber River Parkway, via 6600 South in Uintah.

In the fall, Weber County added a new section of Skyline Dr that provides a direct connection from the Skyline Dr section of the BST Connector in South Ogden to the Skyline Dr section in Ogden. The new roadway will include bike lanes and provide a more direct connection to the BST starting in Beus Canyon.

Much of our historic trail system was built without the benefit of modern trail design technique, and additionally, has seen significant wear over the years. Many of the trails, particularly those heavily used trails on the front side of the mountains, have become “cupped”, which creates a path for water to speed up the erosion process. So in 2016 Weber Pathways created and led a Trail Modernization project.



During the spring and summer months of this year several groups of experienced trail builders tackled problematic sections of existing trail, rebuilding and reworking the tread. The new work included rock retaining walls, armored trail in persistently wet areas and lots and lots of new water management features.

This effort has created sustainable trails where before we were losing the battle with erosion and wear. Work was supported by crews from Wasatch Civil Engineering, Osprey Packs, Snowbasin, the HUMR running group, the Wasatch 100 racers, the Ogden Cycling Education Foundation, high school mountain bike teams and many others who put in the hard work that has made this project so successful. We plan to carry this project forward into the coming years to continue improving the quality and sustainability of our legacy of trails in Weber County, especially the BST.



Future plans for the BST are for a connection on the south to the Weber River Parkway (WRP) and eventually to the BST at the mouth of Weber Canyon. To this end, Weber Pathways is also supporting Uintah City in their effort to obtain permission from Union Pacific RR to widen one of their roadways in order to add bike/ped lanes. This will provide a 3-mile link from the BST Connector to the Weber River Parkway. Also, Weber Pathways is working with South Weber City to support their master plan for trails that includes tunnels under I-84 to connect with the WRP and to add connection from Fisherman’s Point to the WRP. Both of these efforts will create a connection to the BST in Davis County.



<b>Trail Miles</b>	<b>Proposed</b>	<b>Constructed to Date</b>
Weber County	29	26

For information about BST planning in the Weber County portion, contact Mark Benigni, Weber Pathways Executive Director, at (801) 393-2304 or [mark@weberpathways.org](mailto:mark@weberpathways.org) or Geoff Ellis, Weber Pathways board member, at [gellis@stanfordalumni.org](mailto:gellis@stanfordalumni.org).

**Davis County**

Centerville City updated all trailhead kiosks with new maps and info, new Plexiglas and stain to the wood structures. The Centerville Trails committee is working on developing a mountain bike single track loop that will be all around and on part of the BST and is working through the approval process with all of the stake holders.

During the 2016 legislative session the Utah Legislature awarded Davis County a \$150,000 appropriation for a NEPA study and the initial phase of construction of the BST in Davis County. The NEPA study has been a huge hurdle to overcome and this appropriation will allow the County to plan a countywide alignment for the trail. The widest gap in the trail is from the Bountiful B to Tunnel Springs Park, while other smaller gaps exist on the north and center of the County. The appropriation was sponsored by Rep. Becky Edwards. Various planning meetings were held to identify the preferred alignment and affected property owners.

Trail Miles	Proposed	Constructed to Date
Davis County	56	14

For information about BST planning in the Davis County portion, contact Jeff Oyler at 801-451-3279 or [joyler@co.davis.ut.us](mailto:joyler@co.davis.ut.us).

**Salt Lake County**

Salt Lake City acquired two parcels near City Creek Canyon. One parcel of 144.8 acres, located directly north of Ensign Peak, is known as Hell Canyon. The parcel fills a gap in the city's foothill open lands area and includes a 1-mile section of the BST between Ensign Peak and the TV Tower Road. Buying the parcel protects native gambel oak woodland and secures scenic views from the BST, as well as opportunity for future trail development. The \$753,000 used to buy the 144.8 acres near Ensign Peak exhausted a \$5.4 million Open Space Fund Bond passed by voters in 2003.

Various maintenance issues were tackled during the year, SLC fixed water diversions on the trail east of City Creek. Built new water diversions above the switchback in Dry Creek. Installed a SLOW, BLIND CORNER sign at the bottom of Dry Creek where the trail goes into the brushy section for the last 100 yards. Widened a section of the trail west of City Creek between City Creek and the turn off to Ensign. Pulled yellow starthistle between the intersection above Terrace Hills trailhead and the Bobsled trail intersection.





SLC constructed a new access trail at the H-Rock segment of the BST between Scenic Drive and Devonshire Drive. Work was also done to reroute an access trail reroute between Tomahawk Drive and the BST. A new trail was also built below Sandhurst and Twickenham Drives that



will eventually connect with BST and Ensign Peak as well as a new trail loop on the hill East of Rotary Glen Park.

Urban Rangers continued their work of keeping the BST in Salt Lake City clean and educating users. Through their efforts hundreds of pounds of trash and dog waste were collected.



Under a deal that has been in the works for five years, 848 acres of the Boy Scouts of America property holdings were transferred to the Uinta-Wasatch-Cache National Forest. The transaction was financed with \$3.2 million from the Land and Water Conservation Fund. The Trust for Public Lands brokered the deal and tied up \$2 million of its own money while waiting for the federal dollars to materialize. Through the agreement, the Scouts' Great Salt Lake Council sold most of its canyon holdings outside the youth camp on the canyon floor. This patchwork of mining claims includes pieces in Church Fork and Thaynes Canyon. It also features a 20-acre rectangle in Rattlesnake Gulch that extends from the trailhead up to the Pipeline Trail, which is the proposed alignment for the BST.



Salt Lake County Parks & Rec has continued its efforts to acquire land or easements for the BST in the Mount Olympus area. Also, in partnership with the US Forest Service construction on the trail section between the Mount Olympus Trailhead and Heugh's Canyon made significant progress in 2016. Trail crews from the Cottonwood Canyons Foundation and the Forest Service completed a "scratch trail" between the Mt. Olympus trail and the Hughes Canyon trail. Much

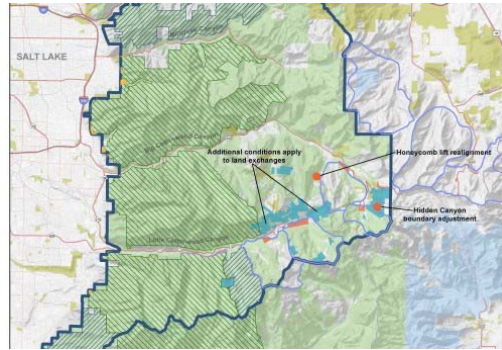


was accomplished with the help of many volunteers, including 65 volunteers on

National Trails Day. Work will continue in the coming year with work scheduled for the spring and fall. Completion of this section is anticipated in 2018.

Preliminary work has begun on extending the BST north from Hidden Valley Park to Rocky Mouth Canyon. This alignment is possible due to the participation of Draper Irrigation, the primary landowner in Big Willow Canyon.

Through efforts of the Mountain Accord, the Central Wasatch Conservation and Recreation act was introduced by Rep Chaffetz in 2016 and will be re-introduced in 2017. Among many other features, this bill adjust wilderness boundaries along the Wasatch Front to allow for a BST that will be open to mountain bikes. In many places the original route for the BST derived in 2005 by Salt Lake County is no longer viable and the alignment has been moved further up the slope and often into the wilderness area.



The Draper City Council voted to extend the areas where dog owners are no longer allowed to take their pets. The change would keep dogs, whether on or off a leash, out of the Corner Canyon watershed and the surrounding areas. Dog owners have not done a good enough job at keeping the area clean, and it was becoming a health hazard. Dogs are now only allowed in designated watershed areas on and downhill from the BST from Hidden Valley Park in Sandy to the junction of Potato Hill Trail and on and downhill from the Potato Hill Trail to the junction of Ann's Trail.



Trail Miles	Proposed	Constructed to Date
Salt Lake County	56	23

For information about BST planning in Salt Lake County, contact Angelo Calacino at 801-468-2534 or [acalacino@slco.org](mailto:acalacino@slco.org).

**Utah County**

Three Falls subdivision started construction of phase one. This property is located in Fort Canyon in Alpine and includes open space and trails as part of the development plan. The proposed trail is a potential alignment of the BST in this corner of Utah County midway between Corner Canyon and Lambert Park.



Lehi City has plans for the BST, including through the Traverse Mountain area. Initial planning of some mountain bike trails in the low hills above the Traverse Mountain development on property that Lehi City now owns. These mountain bike trails would tie into the BST. The City expects to refine those plans and get them adopted into the Bicycle and Pedestrian Master Plan in 2017.

In April 2014 Provo City purchased 80 acres of Rock Canyon for \$1.6 million. In January 2016 the Provo city council agreed to spend \$120,000 to buy a remaining 18 acres, with the Rock Canyon Preservation Alliance kicking in another \$120,000 for the purchase. Part of the property may be used to expand the parking lot for the popular recreation spot. As part of the purchase agreement, Provo agreed to record a preservation easement for the portion of the property just east of existing homes, so that nothing can be built there. The preservation easement doesn't apply to existing easements in the area, such as for utilities or the BST.



Trail Miles	Proposed	Constructed to Date
Utah County	69	30

For information about BST planning in the Utah County portion, contact Jim Price at 801-229-3848, [jprice@mountainland.org](mailto:jprice@mountainland.org).

## Section 3

### About the Bonneville Shoreline Trail Coalition

#### Background

The Bonneville Shoreline Trail Coalition is an organization of entities, both citizen and governmental, representing the communities in Utah involved in promoting, planning and building the Bonneville Shoreline Trail (BST). The Coalition was formed on an ad hoc basis in 2001, and formalized and incorporated in 2003.

#### Trustees

Dave Rayfield – Cache Trails Coalition  
 Barry Burton – Davis County Trail Committee  
 Jim Byrne – Bonneville Shoreline Trail Committee  
 Geoff Ellis – Weber Pathways  
 Jim Price – Mountainland Association of Governments

#### Organizations

Bear River Association of Governments (BRAG)	Salt Lake County
Brigham City	Draper City
Bountiful City	Sandy City
Cache County	Holladay City
Cache Metro Planning Organization	Cottonwood Heights City
Centerville City	Herriman City
City of Logan	Mountainland Association of Governments (MAG)
North Logan City	Provo City
North Ogden City	Orem City
Utah Conservation Corps	Weber Pathways
Davis County	Ogden Trails Network
South Weber City	Ogden City
Layton City	Weber County
Kaysville City	State Division of Parks & Recreation
Fruit Heights City	U. S. Forest Service
Davis County	Natural Resources Conservation Service (NRCS) & Great Salt Lake RC&D
Farmington City	
City of North Salt Lake	
Salt Lake City	The Trust for Public Land